

Thank you for choosing Combi Washable Hair Clipper. This is a general family use product. Please read this manual carefully and use the product accordingly.

Usage: Above 6 Months

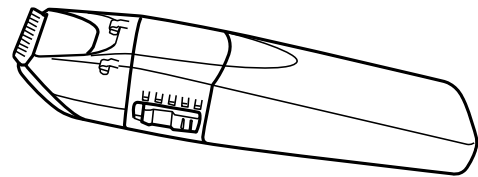
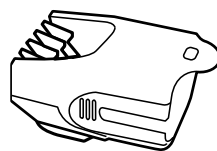
⚠ WARNING:

- Always use under adult supervision.
- Do not use the product in ways or for purposes other than mention on the packaging. Improper usage may cause danger to child.
- Do not use the device if the cutting unit or the trimming comb is damaged or broken, as this may cause injury.
- Never immerse the device in water or rinse it under the tap. Only the blade unit can be rinsed under the tap.
- Use and store the device at a temperature between 5°C and 35°C.
- Clean the blade every time after use.
- Do not mix old and new batteries of different types.
- Do not mix alkaline, standard (carbon-zinc), or rechargeable (nickel – cadmium) batteries.
- Remove batteries if not in use for long period. Always remove exhausted batteries from the product. Dispose of batteries safely.



Description:

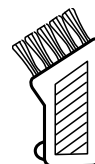
1. Hair Clipper x 1
2. Bottle of lubricating oil x 1
3. Cleaning Brush x 1
4. AAA Battery x 2



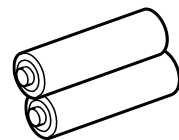
Hair Clipper



Lubricating oil



Cleaning Brush

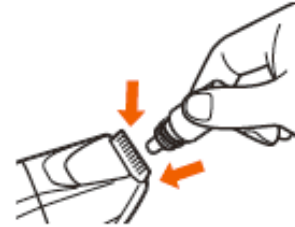


AAA Battery

Instruction for Hair Cutting:

Before starting the cut

Inspect the clipper, make sure that is free of oil between the cutting blade teeth and turn the unit on to distribute the oil and to make sure it is running smoothly .Wipe off any excess oil.



5 Different Level attach comb:

Comb Position	Length
1.	3 mm
2.	6 mm
3.	9 mm
4.	12 mm
5.	15 mm

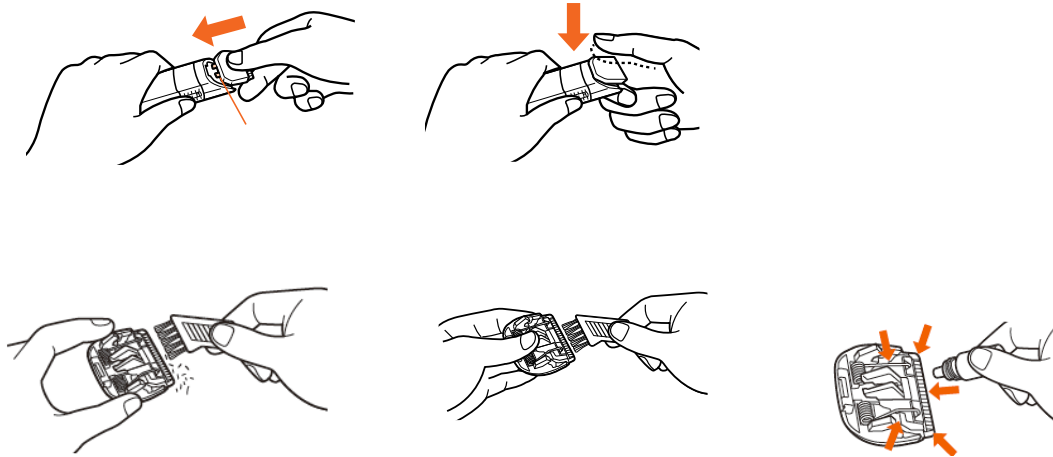
How to use:

1. Attach the comb onto the device.
2. Turn the length setting adjuster to the desired length setting.
Note: When you trim for the first time, start at the highest length setting to familiarize yourself with the device.
3. Switch on the device.
4. To trim most effectively, move the trimmer against the hair growth direction.
Make sure the surface of the comb always stays in contact with the skin.

After use:

Always clean out hair and lubricate the cutter after use.

1. Always turn switch to "OFF" before servicing the unit.
2. Use accessory cleaning brush to clean out hair from the unit and around cutter. Open the blade from the clipper and clean out hair from the inside.
3. Lubricate the cutter with a few drops of oil. (Store the clipper in a dry place.)



Washable Cleaning:

1. The blades will slide out and the blade set can easily be cleaned under the tap.
2. Once the blades are cleaned the blades are locked into place by pushing the blade set towards the hair clipper head and will snap into place.
3. Do not run the entire unit under the tap, only the blade set is meant to be submerged in water.



Safety precautions:

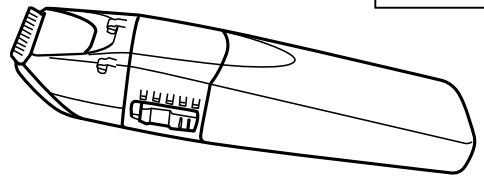
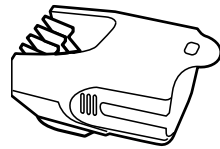
1. Never use cream or gel shaving agents. Cause of blade clogging or damage.
2. When the appliance has stopped moving, do not leave it with the switch turned on.
3. Never place or dry in places exposed to direct sunlight or high temperatures. Cause of damage.
4. Never wipe the device with alcohol, benzene, or thinner. Cause of damage.
5. Keep the hair clipper away from children to avoid suffocation.

感謝您選擇 Combi Washable Hair Clipper. 本產品為一般家用產品 . 請在使用前, 詳細閱讀本說明書 , 正確使用本產品 .

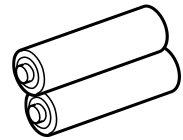
建議產品使用年齡 : 6 個月或以上

各部分名稱 :

1. 理髮器x1
2. 潤滑油瓶x1
3. 清潔刷x1
4. AAA 電池x2



理髮器



潤滑油瓶

清潔刷

AAA 電池

警告 :

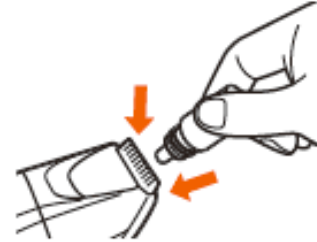
- 本產品請在成人監護下使用
- 如未有依包裝上指引正確做用本產品 , 有可能會對小朋友構成危險 .
- 若刀組或修整梳損壞或破損 , 請勿使用本產品 , 以免造成傷害 .
- 切勿將本產品浸入水中或置於水龍頭下沖洗。只有刀組可以在水龍頭下清洗。
- 請在 5°C 到 35°C 之間的溫度環境中使用 , 存放本產品。
- 每次使用後, 請清洗刀組 , 以便下次使用
- 連續使用時間應在 30 分鐘以內 , 如連續使用時間超過 30 分鐘 , 應每 10 分鐘停止 , 及在刀片上注油.
- 請勿把新舊電池混合使用.
- 請勿把鹼性, 標準(碳鋅)或充電之電池混合使用.
- 在長期貯存的狀態下 , 請把電池取出.



使用前準備：

使用之前

檢查理髮器，使用前後請在刀片的位置滴下 1-2 滴潤滑油。



五段可供調節剪髮長度：

1. 3 毫米
2. 6 毫米
3. 9 毫米
4. 12 毫米
5. 15 毫米

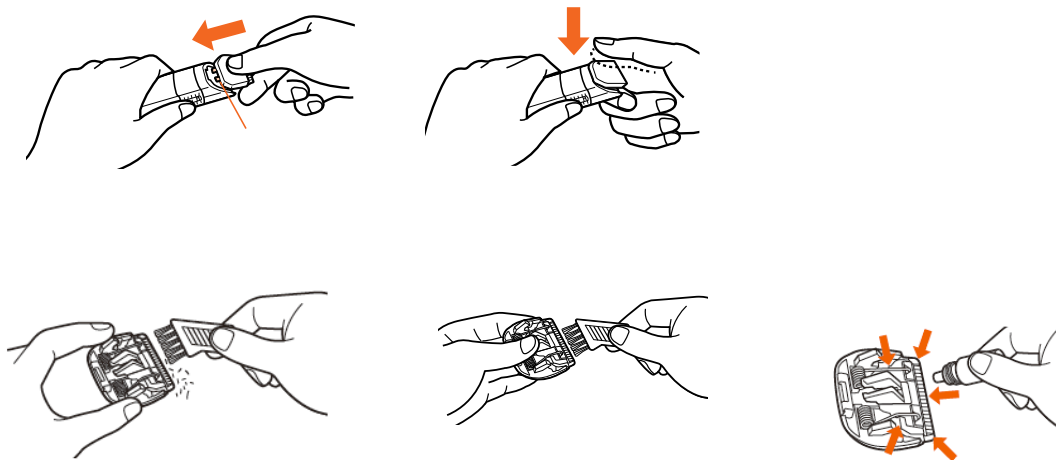
如何使用：

1. 安裝理髮髮梳頭。
2. 將長度設置調節到所顯示的長度。
(初次使用時，建議先調整梳頭至最長的長度)
3. 往上推旁邊的開關鍵，開啟設備。
4. 可進行理髮。

使用後：

使用後務必將刀頭的髮屑清理乾淨並注潤滑油。

1. 清理時，務必將剪髮器關上。
2. 用附屬的清掃刷清掃主體和刀片周圍。從剪髮器本體中退出刀片，清除剪髮器裡面的頭髮。
3. 在刀片上滴潤滑油進行潤滑，把刀片安裝回主體上。



水洗時：

1. 務必將剪髮器關掉
2. 如圖沖洗，請勿把產品浸洗
3. 輕搖主體 4-5 次，並擦拭刀片，待涼乾。
4. 完全乾透後，在刀片滴上一滴潤滑油。
5. 把刀片安裝回主體上。



安全注意事項：

1. 不要使用剃鬚乳或剃鬚膠，以防刀片阻塞或故障。
2. 剪髮器不使用時，請務必關掉剪髮器，以免發生危險
3. 不要將剪髮器在陽光直射下或高溫之處放置或乾燥，以免影響產品性能.
4. 不要用酒精、苯或稀釋劑擦拭剪髮器，以免影響產品性能.
5. 請勿放置兒童可接觸到的地方。